

---

# IKA Service-Manual

---

## Disperser / Dispergiergerät ULTRA TURRAX T 65 D

No. 16028.00



**IKA®**

IKA – Werke GmbH & Co. KG  
Janke & Kunkel-Str. 10  
D - 79219 Staufen

Phone: 0049 (0)7633 831 139 / 202  
Fax: 0049 (0) 7633 500 212  
E-Mail: [service@ika.de](mailto:service@ika.de)  
Internet: [www.ika.de](http://www.ika.de)

Type: **T 65 D ULTRA-TURRAX Antrieb**Item No.: **1602800**

Voltage: 3 x 400 V Y~ 50 Hz

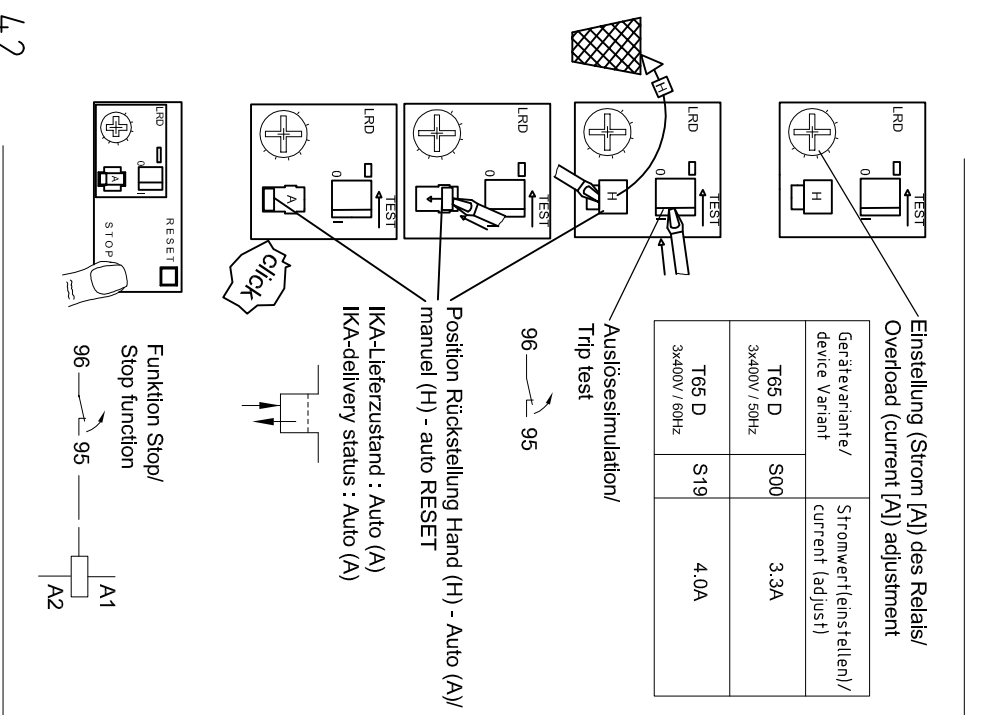
**IKA® Service-Manual**

Date: 10-MAY-2007

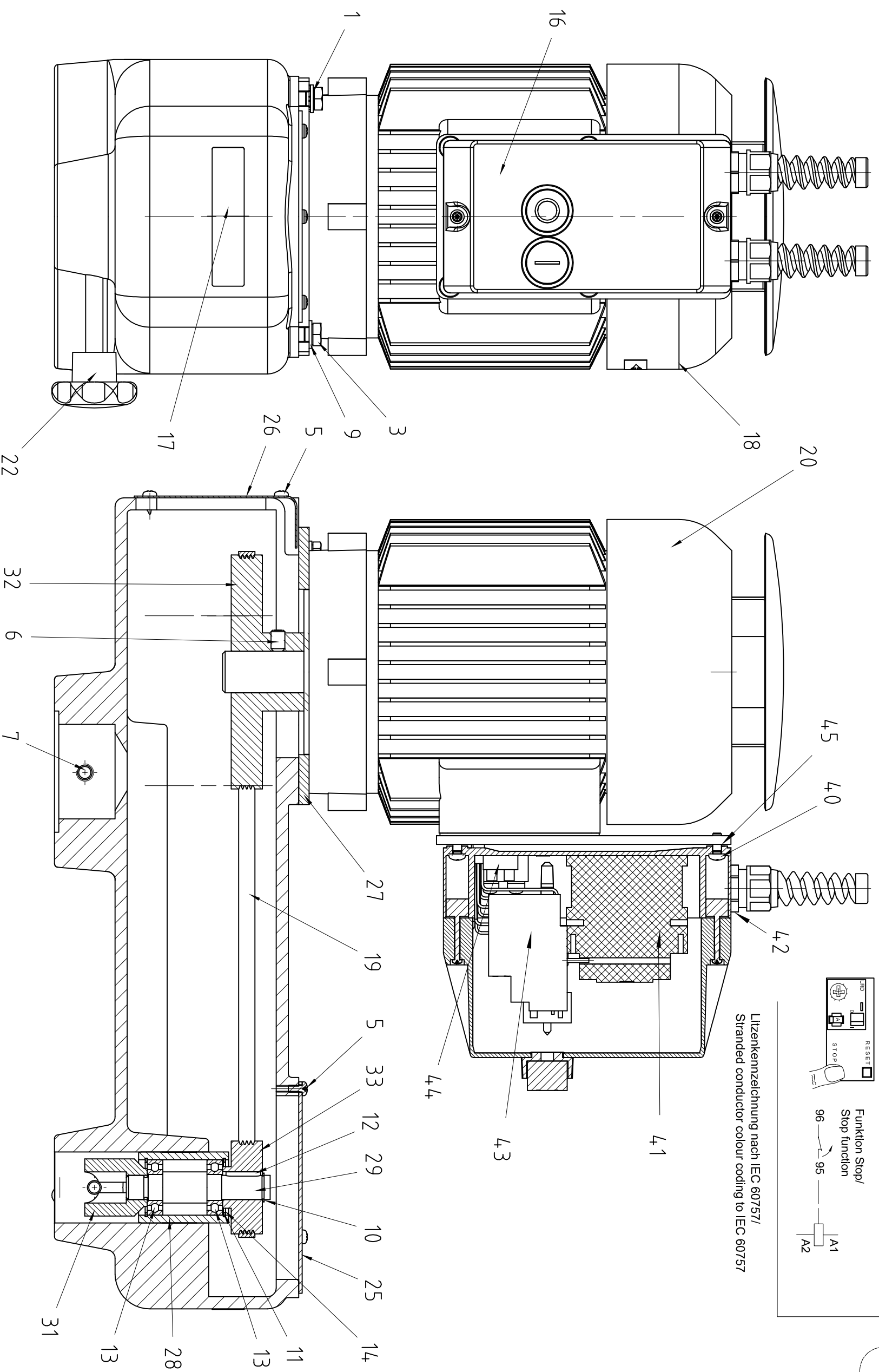
SZ: 1602800SZk

Pos	Item No	Beschreibung	Description	Technical data	Bemerkung	Remark
1	0803000	ZAHNSCHEIBE	TOOTHED LOCK WASHER	J 8,4 -A		
3	0857000	SECHSKANTSCHRAUBE	HEXAGON HEAD SCREW	M 8,0x20,0 8.8-A		
5	1208100	LINSENSCHRAUBE	OVAL HEAD SCREW	M 4,0x 8,0 4.8-A		
6	1055600	GEWINDESTIFT	HEXAGON SOCK.SET SCREW	M 8,0x12,0 45H		
7	1116100	GEWINDESTIFT	HEADLESS PIN	M10,0x30,0 45H		
9	0855400	SCHEIBE	WASHER	B 8,4 St -A		
10	1055700	SICHERUNGSRING	RETAINING RING	14,0x 1,00		
11	0392500	KUGELL.AUSGL.SCHEIBE	BEARING WASHER	24,50x31,70x0,35		
12	1055900	PASSFEDER	PARALLEL KEY	A 5,0x 5,0x20St		
13	0837000	RILLENKUGELLAGER	GROOVED BALL BEARING	15x 32x 9 6002.2 Z		
14	0519600	SICHERUNGSRING	RETAINING RING	J 32,0x 1,20V		
16	2746600	WARNSCHILD	DANGER SIGN	SL 12,5		
17	0522500	FRONTSCHILD	TURRAX LABEL	T65		
18	0428800	PFEILSCHILD	LABEL	13,00x 62,00		
19	0386300	POLY-V-RIEMEN	POLY-V-BELT	Lw=914mm J 9,4=4		
20	0386500	DREHSTROM-MOTOR	THREE-PHASE MOTOR	400V 50Hz 1,5kW	Bis Fabrik Nummer : 01.320000	Until Serial Number : 01.320000
	0386400	DREHSTROM-MOTOR	THREE-PHASE MOTOR	400V 50Hz 1,5kW	Ab Fabrik Nummer : 01.330000	From Serial Number : 01.330000
22	0386600	GRIFFSCHRAUBE	GRIP SCREW	M 8,0		
25	0276100	DECKEL	CAP	D 122,0 Alu		
26	0276000	ABDECKBLECH	COVER METAL SHEET	L 160xB 94xs 1,0		
27	0385400	AUFLAGEPLATTE	BEARING PLATE	160,0x 160,0x 6,0		
28	0353200	LAGERBUCHSE	BUSHING	D 41,0xd 32,0xL 52,0		
29	0352900	ABTRIEBSWELLE	OFF DRIVE SHAFT	D 18,0L 83,0		
31	0353300	KUPPLUNG	COUPLING	D 33,0xd14,0xL 36		
32	0362100	KEILRIEMENSCHLEIBE	V-BELT PULLEY	D135,1xd24,0xL 45		
33	0362200	KEILRIEMENSCHLEIBE	V-BELT PULLEY	D 53,6xd14,0xL 23		
38	3331300	KABELVERSCHRAUBUNG	CABLE GLAND metric		Ab Fabrik Nummer : 01.330000	From Serial Number : 01.330000
40	1405600	LINSENSCHRAUBE	OVAL HEAD SCREW	M 5,0x12,0 4.8-A	Ab Fabrik Nummer : 01.330000	From Serial Number : 01.330000
41	3292902	MOTORSCHUTZ-RELAIS	MOTOR PROTECTING RELAY	2,50... 4,0A	Ab Fabrik Nummer : 01.330000	From Serial Number : 01.330000
42	2990500	GEGENMÜTTER	LOCKNUT	PG 11 / SW24	Ab Fabrik Nummer : 01.330000	From Serial Number : 01.330000
43	3292800	MOTOR DIREKTANLASSER	MOTOR STARTER		Ab Fabrik Nummer : 01.330000	From Serial Number : 01.330000
44	3263700	KLEMMLEISTE	TERMINAL BLOCK	P 1 V400 PA nat	Ab Fabrik Nummer : 01.330000	From Serial Number : 01.330000
45	3397900	FLACHDICHTUNG	FLAT GASKET	22,0x22,0x 1,0	Ab Fabrik Nummer : 01.330000	From Serial Number : 01.330000

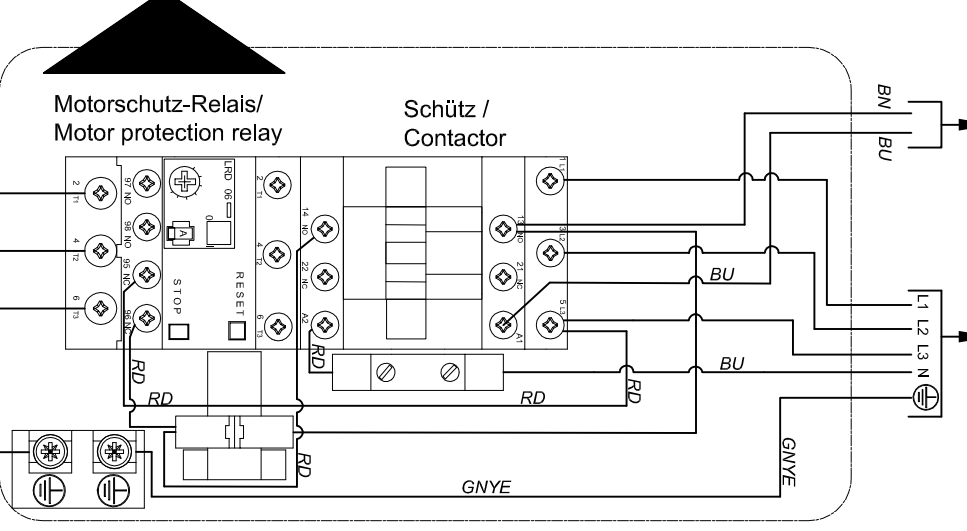
### Verdrahtungsplan / wiring diagram: 3x 400V / 50/60Hz



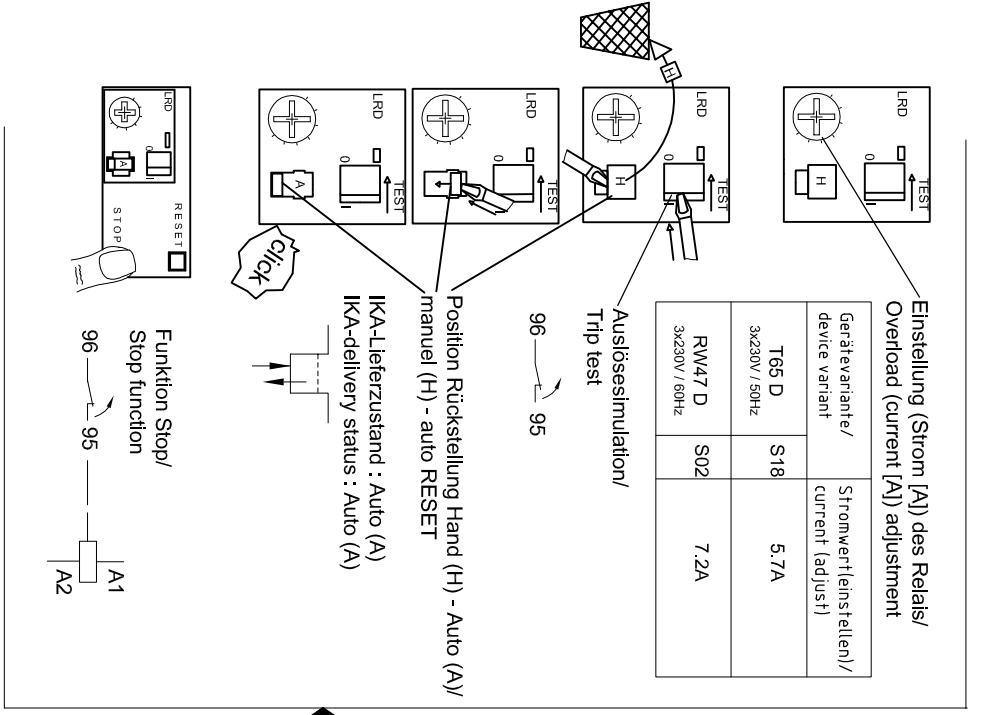
Litzkennzeichnung nach IEC 60757/  
Stranded conductor colour coding to IEC 60757



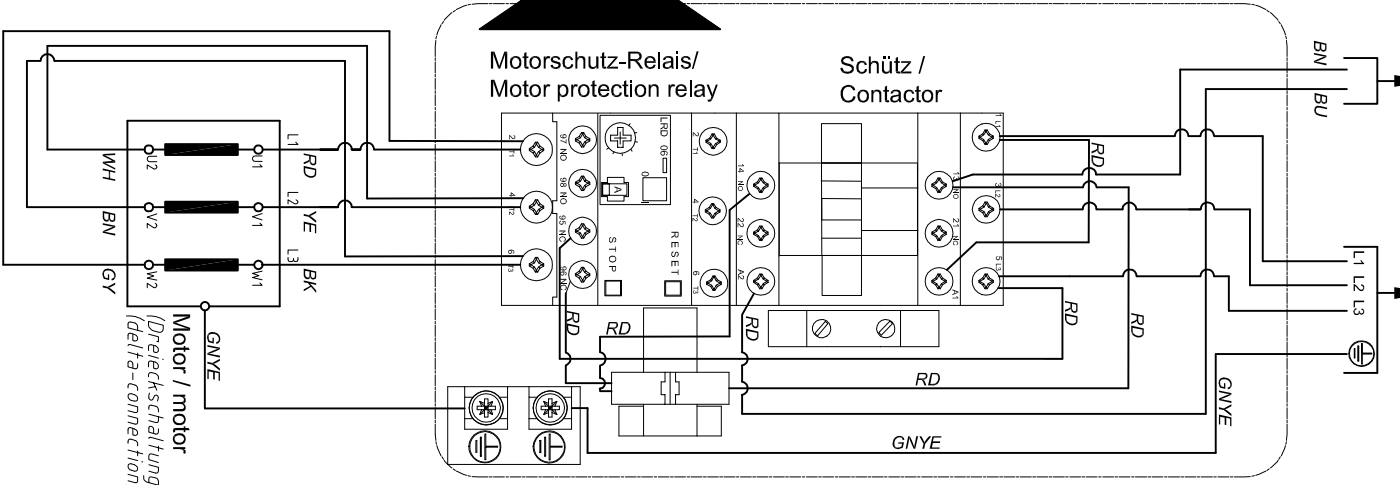
Nicht im Lieferumfang /  
Not included in delivery  
Sicherheitschalter/  
Safety switch



### Verdrahtungsplan / wiring diagram: 3x 230V / 50/60Hz



Litzkennzeichnung nach IEC 60757/  
Stranded conductor colour coding to IEC 60757



Nicht im Lieferumfang /  
Not included in delivery  
Netzkaabel/  
Mains cable